

# TREASURE CHEST



**BLUE  
GUARDIAN**

# TREASURE CHEST for BLUE GUARDIAN

**ENTRANCE – ROMANIAN - MOLDAVIAN Border**

Correct answer: lion

**THE HOUSE OF MOLDAVIA-BUCOVINA**

Correct answer: a

**THE HOUSE OF DOBRUDJA**

Give puzzle to Hero.

Correct answer: **Constanța**

**THE HOUSE OF WALLACHIA**

Give puzzle to Hero

Correct answer: **Transfăgărășanul**

**THE HOUSE OF BANAT-CRIȘANA**

Give puzzle to Hero

Correct answer: **Timișoara**

**THE HOUSE OF TRANSYLVANIA**

Correct answer: **Bran Castle**

**THE HOUSE OF MARAMUREȘ**

Listen to the recipe of “ciorba” provided by the Hero and only after that allow the team to move forward to the exit.

**EXIT – ROMANIAN - HUNGARIAN Border**

Listen to the story told by the Story teller and only after that allow the team to exit Level I of the labyrinth.



# TREASURE CHEST



L2

BLUE  
GUARDIAN

# TREASURE CHEST for BLUE GUARDIAN

**ENTRANCE – ROMANIAN - MOLDAVIAN Border**

Correct answer: **pork**

**THE HOUSE OF MOLDAVIA-BUCOVINA**

Give puzzle to Hero

Correct answer: **The Churches of Moldavia**

**THE HOUSE OF DOBRUDJA**

Give puzzle to Hero

Correct answer: **Simona Halep**

**THE HOUSE OF WALLACHIA**

Watch the Hero perform the Romanian dance and only after that allow the team to move forward to the next labyrinth stop.

**THE HOUSE OF BANAT-CRIȘANA**

Correct answer: **Pitești**

**THE HOUSE OF TRANSYLVANIA**

Listen to the story told by the Hero and only after that allow the team to move forward to the following labyrinth stop.

**THE HOUSE OF MARAMUREȘ**

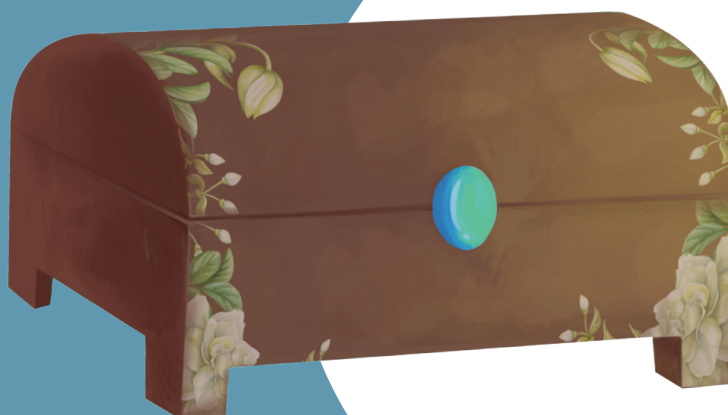
Correct answer: **dragoste**

**EXIT – ROMANIAN - HUNGARIAN Border**

Listen to the story told by the Story teller and only after that allow the team to exit Level I of the labyrinth.

L2

# TREASURE CHEST



L3

BLUE  
GUARDIAN

# TREASURE CHEST for BLUE GUARDIAN

**ENTRANCE – ROMANIAN - MOLDAVIAN Border**  
Correct answer: Dragobete

**THE HOUSE OF MOLDAVIA-BUCOVINA**  
Correct answer: Bacău

## THE HOUSE OF DOBRUDJA

Listen to the song “Dragostea din tei” sung by the Hero and only after that allow the team to move forward to the following labyrinth stop.

## THE HOUSE OF WALLACHIA

Give puzzle to Hero  
Correct answer: Bucureşti / Bucharest

## THE HOUSE OF BANAT-CRIŞANA

Listen to how the Hero would build a bridge over the Danube and only after that allow the team to move forward to the following labyrinth stop.

## THE HOUSE OF TRANSYLVANIA

Correct answer: Astra Museum

## THE HOUSE OF MARAMUREŞ

Correct answer: Cluj-Napoca, also known as Cluj

## EXIT – ROMANIAN - HUNGARIAN Border

Listen to the story told by the Story teller and only after that allow the team to exit Level I of the labyrinth.

13